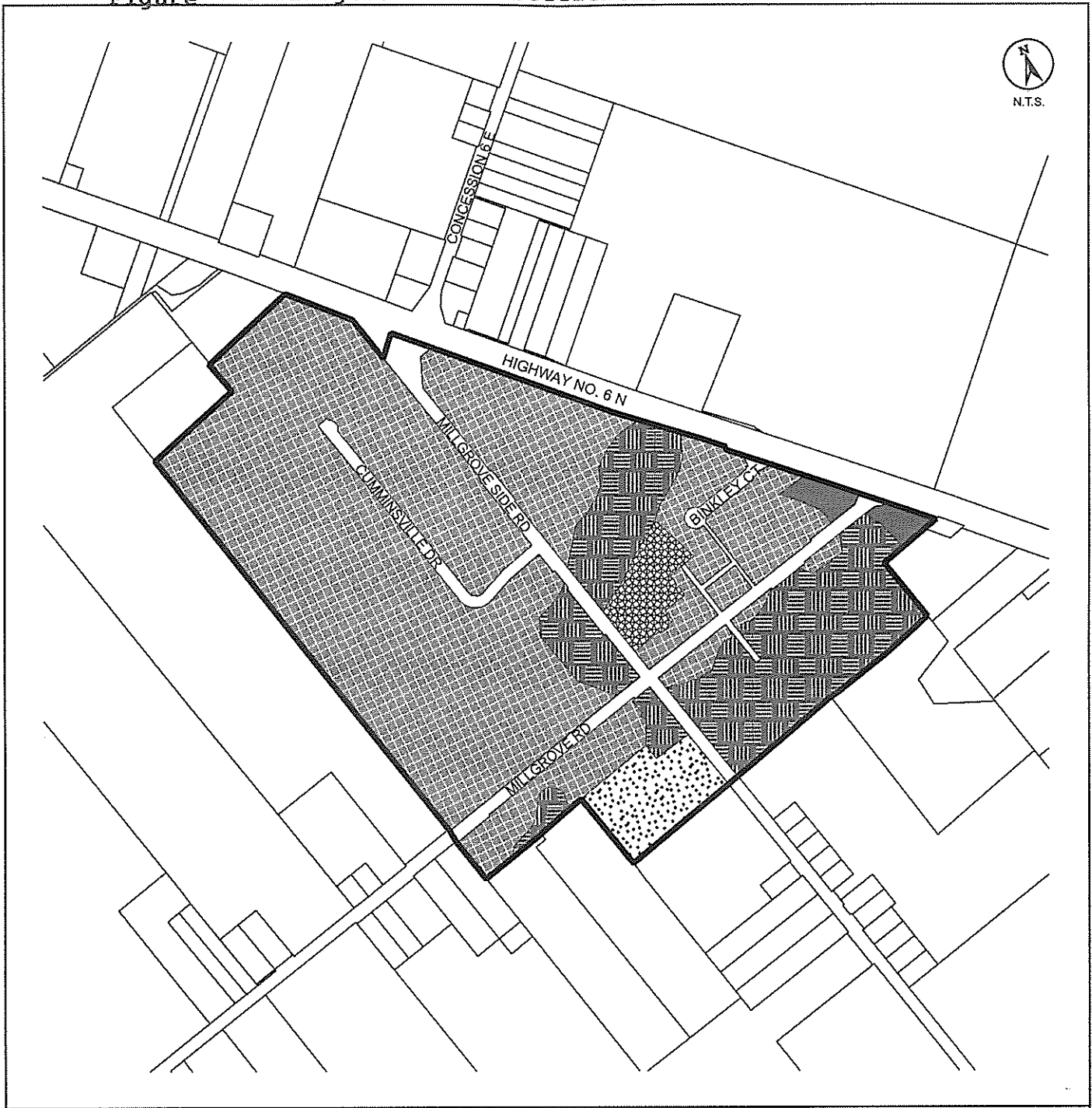



Figure 14: Millgrove Rural Settlement Area




**Legend:**

 Settlement Area Boundary

**Land Use Designations**


 Settlement Residential

 Settlement Commercial

 Hazard Lands

**Open Space and Parks Designations**

 Community Park

 General Open Space

**Volume 2: Map 11  
Millgrove Rural Settlement Area Plan**

**Hamilton Official Plan**  
Council Adoption: September 27, 2006  
Ministerial Approval: Pending



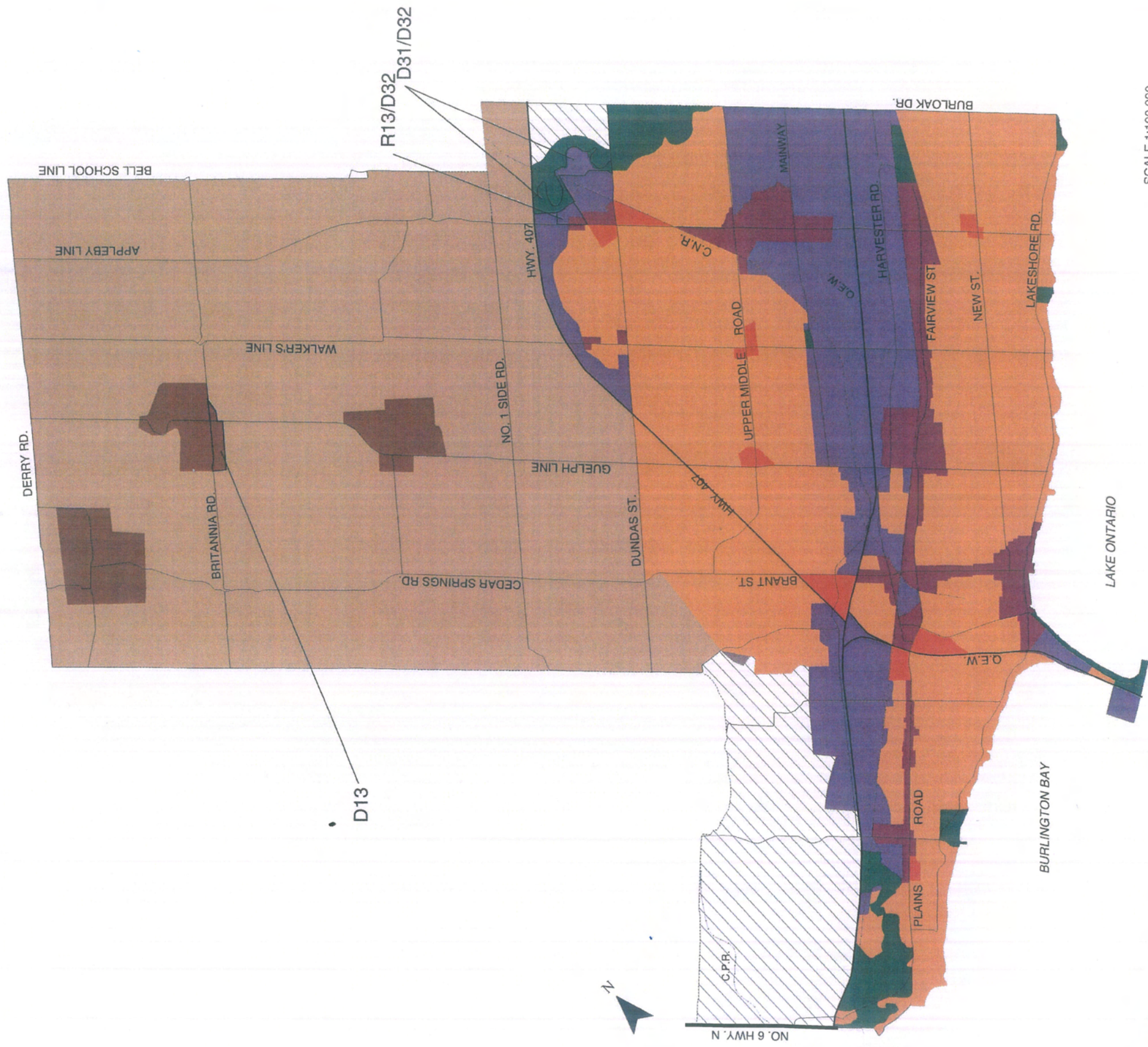
Figure 15: Alternative Haul Routes Overlay on City of Burlington Official Plan

— Relevant Segment of Alternative Haul Routes

**SCHEDULE A**

**CITY STRUCTURE**

(Schedule A is included for general reference only. Official Plan designations are shown on Schedules B through J)



**LEGEND**  
**MAJOR LAND USE POLICY AREAS**

- Employment Lands
- Land Use Designation to be Determined
- Major Retail Areas
- Mixed Use Activity Areas
- Natural Features/Open Space
- Residential Areas
- Rural Lands
- Rural Settlement Area
- North Aldershot Policy Area

SCALE 1:100,000

Latest Revision: JUNE 2005

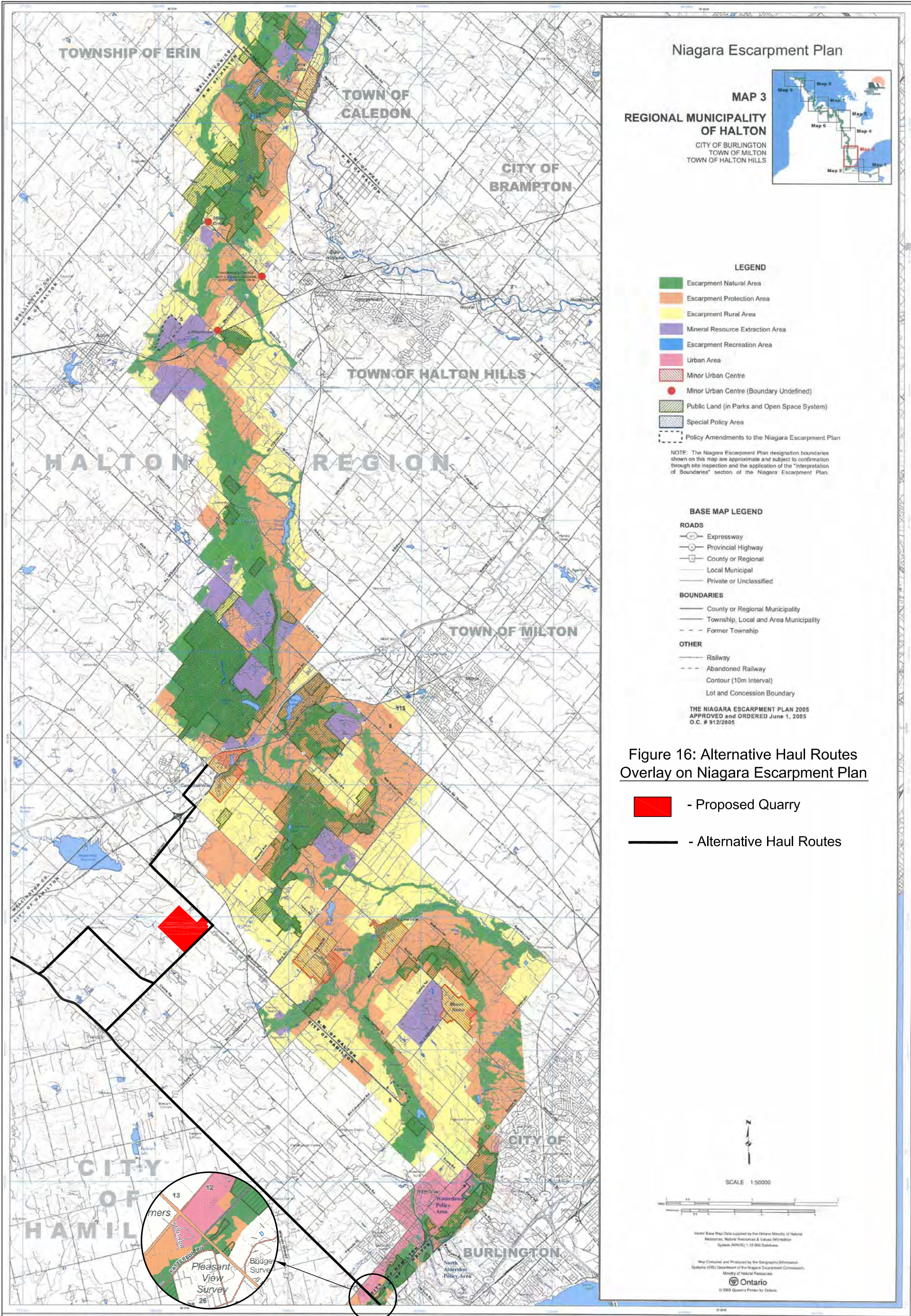


Figure 16: Alternative Haul Routes Overlay on Niagara Escarpment Plan

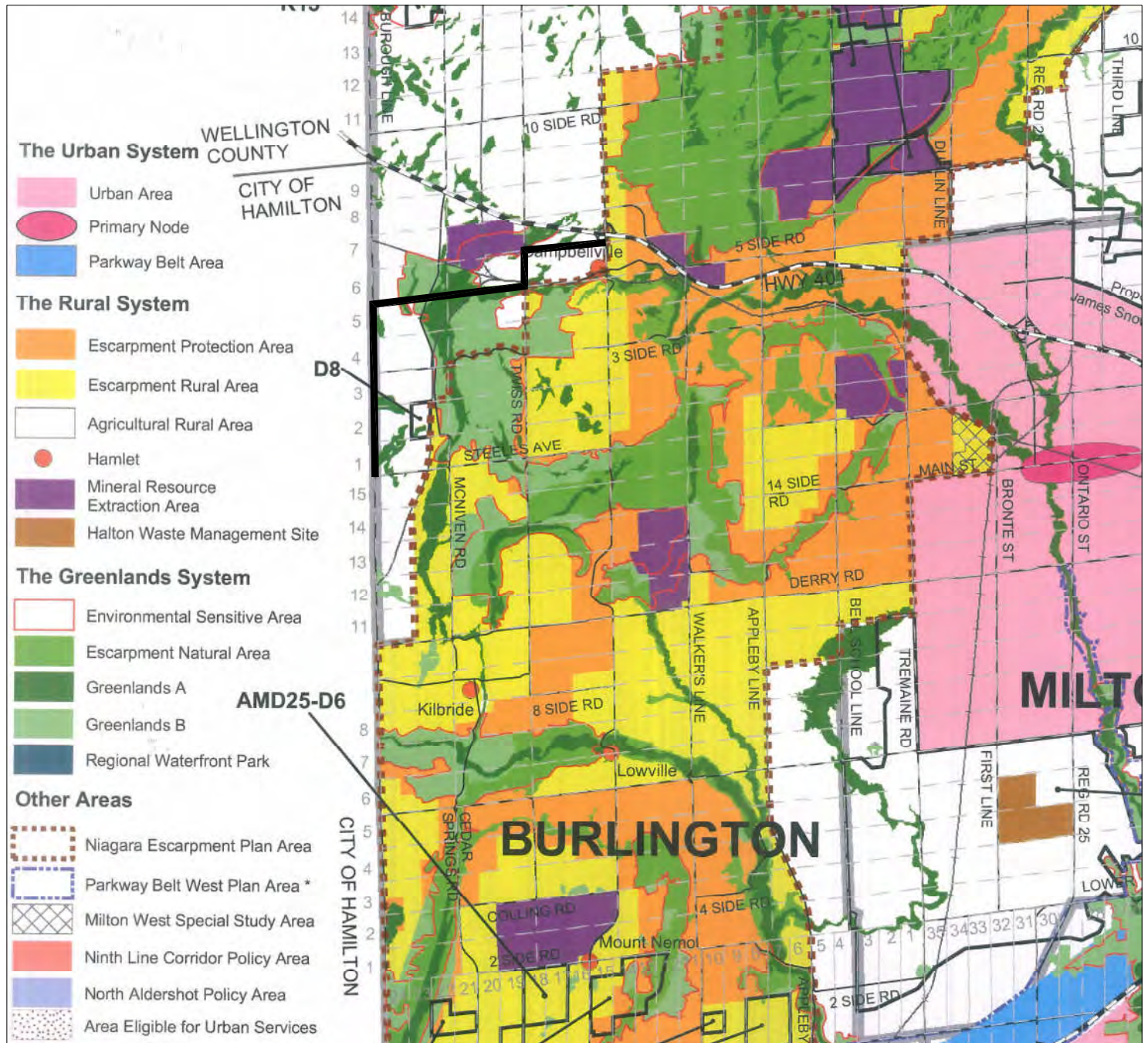
- Proposed Quarry
- Alternative Haul Routes

Part of Lot 10,  
Campbellville Road,  
rough;

Figure 17: Chestnut Grove Site Specific Area



Figure 18: Alternative Haul Routes Overlay on Region of Halton Official Plan



— Alternative Haul Routes

August 20, 2008



GLEN SCHNARR & ASSOCIATES INC.  
 URBAN & REGIONAL PLANNERS, LAND DEVELOPMENT CONSULTANTS  
 SUITE 700 10 KINGSBRIDGE GARDEN CIRCLE,  
 MISSISSAUGA, ONTARIO, L5R 3K6  
 TEL (905) 568-8888 FAX (905) 568-8894

Figure 19: Alternative Haul Routes Overlay on Town of Milton Official Plan

— - Relevant Segment of Alternative Haul Routes

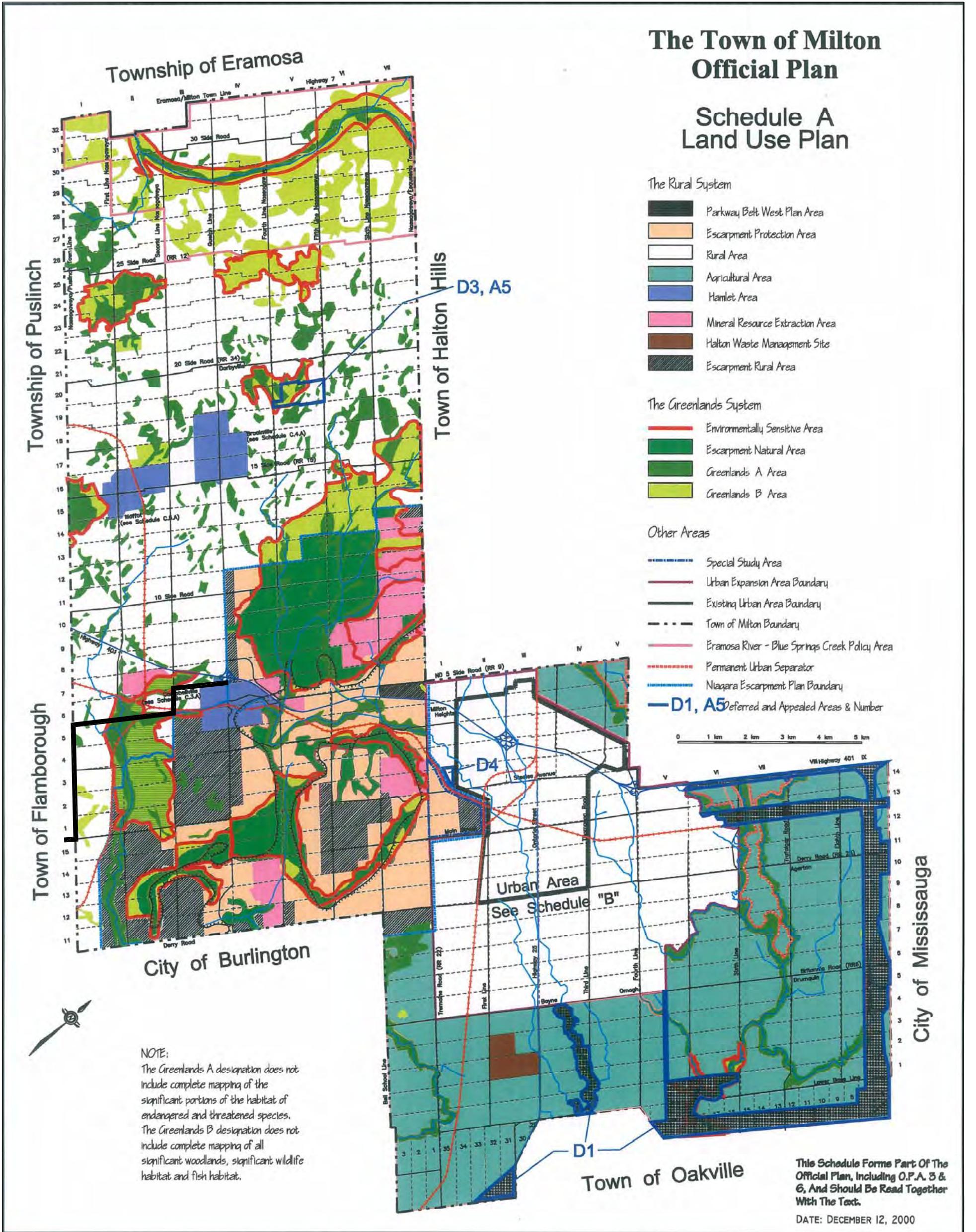


Figure 20: Stonebury Place Site Specific Area

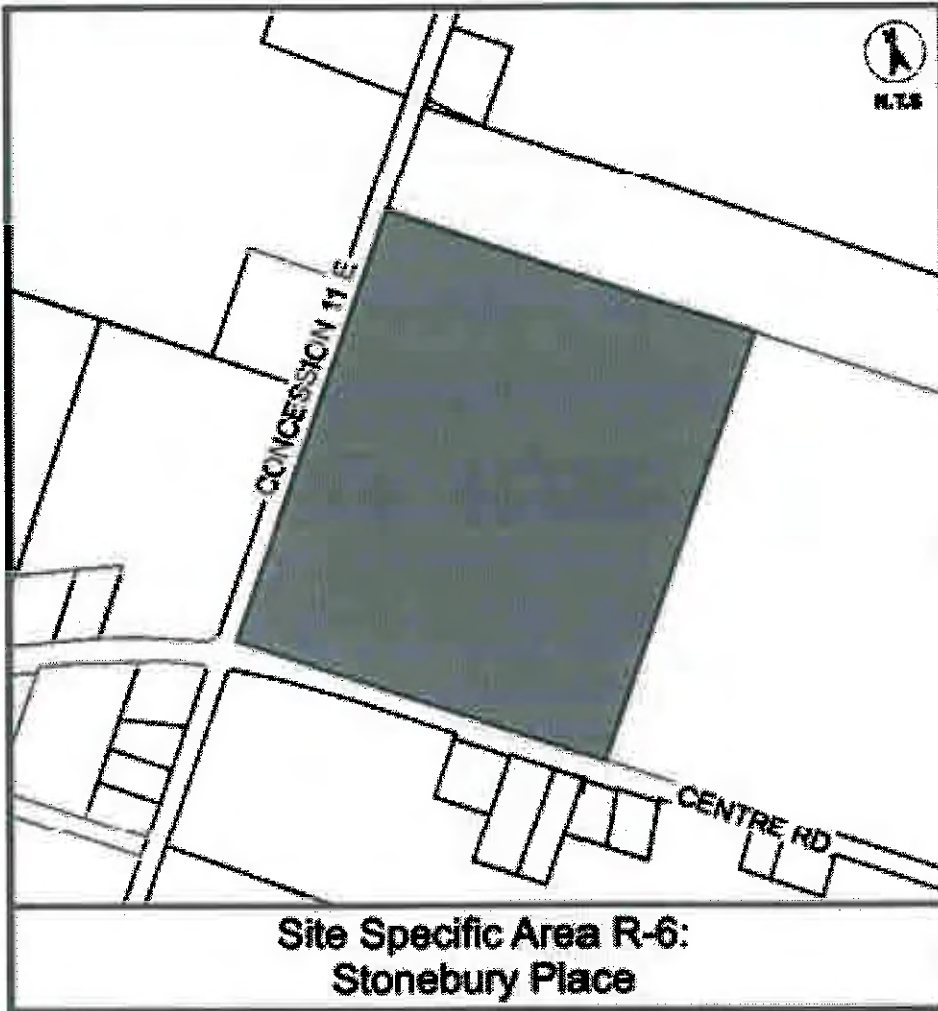


Figure 21: Timberrun Site Specific Area

